

SHARP®

E R - A 4 5 0 T

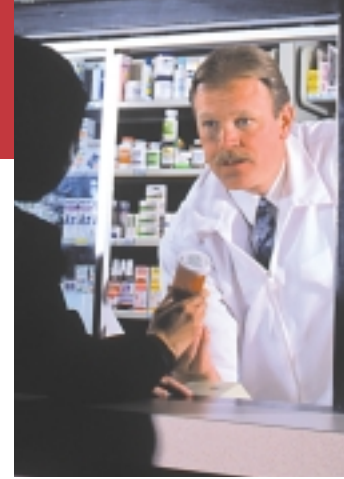
E L E C T R O N I C C A S H R E G I S T E R



**SUPERIOR FEATURES,
OUTSTANDING RELIABILITY
AND EXCEPTIONAL VALUE**

The Small Electronic Cash Register with Big, Innovative Features

Discover the big advantages of the surprisingly small Sharp ER-A450T. With counter space at a premium, the ER-A450T's compact design with high capacity drawer is the perfect fit for your business. And with its bright LED displays, both operator and customer can read transactions with ease.



A Quick and Quiet Thermal Printer

Speed customers through checkout and print receipts and reports faster than ever with the ER-A450T's high-quality, whisper-quiet alphanumeric receipt/journal thermal printer. At approx. 13 lines per second, you'll be amazed at its detail and quality of receipts and reports. And with the printer's graphic logo capabilities, receipts can even be personalized with a custom logo design.



Enhanced Connectivity for Increased Flexibility

Two standard RS-232 ports give you all the connectivity you need to perform virtually any point-of-sale operation. Peripheral possibilities include scanners, scales, slip printers, coin dispensers, and more. Using the ports, you can connect your ER-A450T directly to a PC to upload or download item, pricing, sales and inventory information.

Scanning Interface Delivers Powerful Possibilities

By connecting an optional bar code scanner to your ER-A450T, you can increase its performance potential dramatically. Scanning will enhance transaction quickness and checkout efficiency, improve data input accuracy, expedite training, and ease inventory management control.

With its standard built-in scanning interface, the ER-A450T is capable of recognizing up to 15,000 UPC-A and EAN codes which allows Inquiry, Learning, Price Change, and Mix and Match functionality. Plus the ER-A450T makes inventory management and item input a breeze with its 'instant learn' capability. Just scan an item, key in the price and the unit will fix that price to memory. It's that simple! Plus, with its mix/match table, the ER-A450T's software will automatically keep track and apply daily specials and multiple item discount purchases all on the same transaction – for quick and efficient processing. The result is better inventory control, easier and more accurate operator use, substantially improved transaction times and greater customer satisfaction.

Programming Is Easier Than Ever

Programming your ER-A450T with the functionality you need is surprisingly simple. From start to finish, interactive programming guides prompt users through cursor-defined options, allowing quick and easy input. Effortless programming allows the user to change pricing, add items, modify text and set PLUs (price look ups) without difficulty. Plus, choose from 12 or 16 character text descriptors to clearly identify departments, UPCs and PLUs with as much or as little detail as you need.

HIGHLIGHTS

- High-speed, super quiet alphanumeric thermal printer with graphic logo capability
- Standard scanning interface for error-free transaction processing and inventory control
- True system expansion with two standard RS-232 interface ports (to allow for optional accessories such as scale, scanner, slip printer)
- Quick and easy interactive programming
- Large operator and customer LED Displays for easier transaction viewing
- Charge posting functionality provides exceptional customer service



The Sharp ER-A450T, configured with optional slip printer and optional scanner, delivers superior functionality to your business.

Accountability That Counts

With the ER-A450T, access to your most important information is just a touch away. With the charge posting function, your more frequent customer transactions, payments and balances can be maintained in the ER-A450T's memory. The optional slip printer provides the added convenience of printing charge post folios for instant accountability and record keeping. And with the electronic cash register's age verification functionality, your operator can monitor the purchase of products that have minimum age requirements. You can also monitor all your business activities through a full complement of flash and paper reports. Superior functionality – all designed to provide you with the critical information you need to run your business as efficiently as possible.



Designed to the Smallest Detail

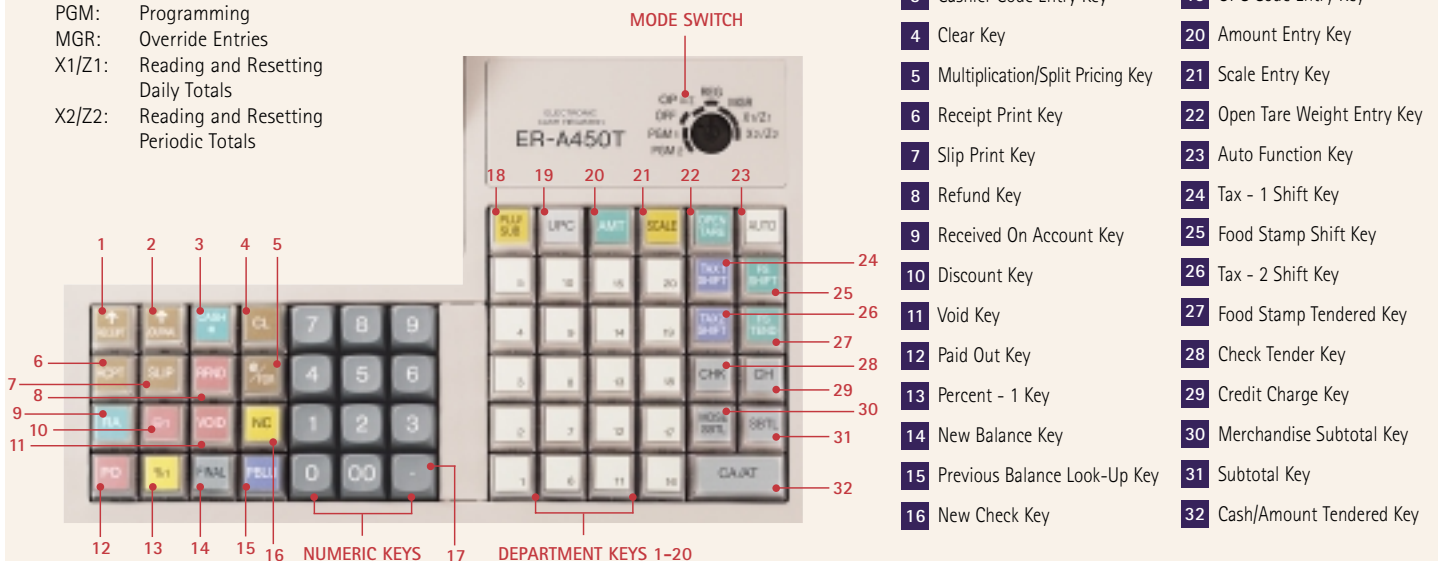
The ER-A450T offers a range of advantages few other electronic cash registers can equal.

- Alphanumeric Thermal Printer with Graphic Logo Capability
- Large LED Customer and Operator Displays
- 2 Standard RS-232 Ports
- Charge Posting Functionality
- High-Capacity Lockable Cash Drawer
- 4 Standard Cashiers – expandable to 99
- Easy Training Mode
- 20 Standard Departments – expandable to 50
- Auto Key Function (maximum 10)
- 500 Standard PLUs – expandable to 10,000
- 5,000 Standard UPCs – expandable to 15,000 UPC-A and EAN codes
- Price Shift Function
- Optional Slip Printer allows Validation Capabilities and Charge Posting folio printing
- Age Verification Functionality
- Food Stamp Capability
- Full Reports Capability

THE ER-A450T'S ADVANCED FEATURES AT A GLANCE

MODE SWITCH

- REG: For Entering Sales
- OP X/Z: Reading and Resetting of Cashier Totals, Display of Flash Reports
- OFF: Prevents Key Entry
- VOID: Cancellation of Over Rings After the Finish of a Transaction
- PGM: Programming
- MGR: Override Entries
- X1/Z1: Reading and Resetting Daily Totals
- X2/Z2: Reading and Resetting Periodic Totals



- 1 Receipt Paper Feed Key
- 2 Journal Paper Feed Key
- 3 Cashier Code Entry Key
- 4 Clear Key
- 5 Multiplication/Split Pricing Key
- 6 Receipt Print Key
- 7 Slip Print Key
- 8 Refund Key
- 9 Received On Account Key
- 10 Discount Key
- 11 Void Key
- 12 Paid Out Key
- 13 Percent - 1 Key
- 14 New Balance Key
- 15 Previous Balance Look-Up Key
- 16 New Check Key
- 17 Decimal Point Key
- 18 PLU Code Entry Key
- 19 UPC Code Entry Key
- 20 Amount Entry Key
- 21 Scale Entry Key
- 22 Open Tare Weight Entry Key
- 23 Auto Function Key
- 24 Tax - 1 Shift Key
- 25 Food Stamp Shift Key
- 26 Tax - 2 Shift Key
- 27 Food Stamp Tendered Key
- 28 Check Tender Key
- 29 Credit Charge Key
- 30 Merchandise Subtotal Key
- 31 Subtotal Key
- 32 Cash/Amount Tendered Key

ER - A 4 5 0 T

ELECTRONIC CASH REGISTER

Report Title	Description
Individual Department Group	Allows the store owner to select a specific group number or every group for which to analyze associated department sales data
Group Total	Summarizes sales totalizers for every group number
PLU by Range	Allows the store owner to analyze PLU sales data by a specified range of PLU codes
PLU by Associated Department	Allows the manager/owner to report the PLU sales by its associated department number
PLU Zero Sales (all)	Lists PLU items which have not accumulated sales totalizers
PLU Price Category	Allows the PLU sales totalizers to be reported based on its Unit Price by a specified range
UPC	Allows the store owner to analyze UPC sales data
UPC by Associated Department	Allows the manager/owner to report the UPC sales by its associated department number
UPC Zero Sales (all)	Lists UPC items which have not accumulated sales totalizers
Non Access UPC (all)	Reports those UPC codes that have had no sales activities for a period of time and may be deleted
Transaction	Provides all related media accountability for the business day, which can justify collected monies for the items sold
CID (Cash in Drawer)	Total Cash in Drawer
Full Cashier	Provides sales and media accountability for up to 99 cashiers who have made sales entries
Individual Cashier	Allows the store owner or manager to audit each individual's sales and media accountability one person at a time
Full Hourly /Hourly by Range	Provides the store owner with the number of transactions and sales total by 1 hour or 30 min. increments for a 24 hour period. This becomes a useful tool in determining which times of the day your business is most successful. The hourly report can also be useful to determine when extra employees are necessary.
Previous Balance Look Up	Allows the manager/owner to view all charge posting balances by customer
Previous Balance Look Up by Cashier	Allows the manager/owner to view all charge posting activity done by individual cashier
Stacked	Prints a maximum of 15 reports in succession within a single reporting operation
Flash Reports	Allows the store owner or manager to view a defined total in the ECR's display for quick up-to-the-moment analysis of the day's business
Department Sales	By selected department number
CID (Cash in Drawer)	Total cash in drawer
Daily Net Total	Net sales plus tax

ER-A450T Specifications

DISPLAY		Other Printing Functions: Graphic logo printing with 3-line header or footer Logo message function (6 line max) Receipt (on/off) function, journal selective function Receipt and journal independent paper feed function	GENERAL		
Type	L.E.D. Yellow/Green Display		Keyboard type	Raised keyboard	
Operator	1 Line/10 digit numeric, 7 segments		# of keys	Standard 62, maximum 68	
Customer (pop-up)	1 Line/7 digit numeric, 7 segments	Dimensions	16.5"(w)x16.8"(d)x11.5"(h)		
PRINTER		DRAWER	Weight	27.6 lbs	
Type	2 station(receipt/journal) Thermal	Bill	5 Compartments	Power Consumption	14W Standby 41W Operating (maximum)
Printing Capacity	Receipt: 24 characters maximum Journal: 24 characters maximum	Coin	5 Compartments	Power Source	Official (nominal) voltage and frequency
Print Speed	Approximately 13.3 lines per second	Other Drawer Features:			
Logo Message Text	6 line message maximum	Security lock			
Paper Width	1.75" +/- .02" (44.5mm +/- .05mm)	Drawer open sensor			
Thickness	.06 to .08mm thickness	Pull out cash till			
Paper Roll Diameter	3.15" (80mm) maximum	Heavy duty metal construction			
Paper Type	Thermal	Option	2nd drawer		

Design and specifications are subject to change without notice.

Distributed by:

SHARP
FROM SHARP MINDS
COME SHARP PRODUCTS™

SHARP ELECTRONICS CORPORATION
SHARP PLAZA
MAHWAH, NEW JERSEY 07430-2135
www.sharp-usa.com
USA PHONE: 1-800-BE-SHARP

ECR-954